

TT TUBE FURNACE

GENERAL INFORMATION

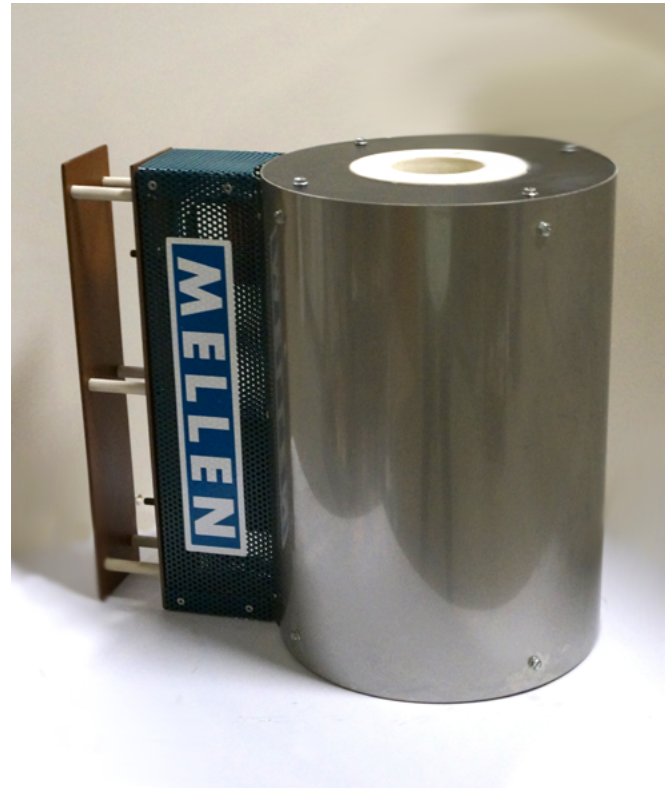
The furnace operates at temperatures up to 1200°C in air. The TT Tube Furnace is a premium, solid tubular furnace engineered to achieve excellent temperature uniformity within the chamber. This type of furnace is well-suited for most heating applications, and features Mellen's dependable shunt-type heating elements. It is designed to be energy efficient with excellent temperature uniformity. Single or multiple zones are available with coated firebrick vestibules.

HEATING ELEMENT

The furnace utilizes Solid Tube or REH winding heating elements capable of 1200°C in air. The Solid Tube heating elements are capable of up to 1200°C. The REH windings are capable of up to 1200°C.

CONTROLLER

Sold Separately.



SERIES	TT Tube Furnace
MAX TEMPERATURE	1200°C
ELEMENT TYPE	Solid Tube or REH windings
CONTROLLER	Sold Separately
VOLTS	120V & 208V/240V

*As always, if this product does not meet your requirements, please contact us.
Mellen will work with you personally to create a product that best suits your needs every time.*

Prices are valid until 2018.



TT TUBE FURNACE

MODEL	HEATED LENGTH (IDxL)	V:W	EXTERNAL DIMENSIONS (ODxL)	MAX TEMP
TT11-1x36	1"x36"	120V:1262W	8"x39"	1100°C
TT11-1.5-12	1.5"x12"	120V:516W	8"x15"	1100°C
TT11-1.5x24	1.5"x24"	120V:1134W	27"x8"	1100°C
TT11-2x12	2"x12"	120V:730W	8"x15"	1100°C
TT11-2.5x18	2.5"x18"	120V:1520W	10"x21"	1100°C
TT11-2.5x24	2.5"x24"	120/240V:1930W	10"x27"	1100°C
TT11-3x12	3"x12"	120V:1038W	10"x15"	1100°C
TT11-3x18	3"x18"	120V:1682W	10"x21"	1100°C
TT11-3x24	3"x24"	120/240V:2500W	10"x27"	1100°C
TT11-3.5x18	3.5"x18"	120/240V:1945W	11"x21"	1100°C
TT11-3.5x24	3.5"x24"	208/240V:2618W	11"x27"	1100°C
TT11-4.125x18	4.125"x18"	208/240V:1380W	12"x23"	1100°C
TT11-4.125-36	4.125"x36"	208/240V:4206W	12"x42"	1100°C
TT11-5x18	5"x18"	208/240V:3080W	14"x23"	1100°C
TT11-5x24	5"x24"	208/240V:3480W	14"x29"	1100°C
TT11-5x36	5"x36"	208/240V:5220W	14"x41"	1100°C
TT11-5x48	5"x48"	208/240V:7680W	14"x53"	1100°C
TT11-6.125x24	6.125"x24"	208/240V:4080W	16"x29"	1100°C
TT11-6.125x36	6.125"x36"	208/240V:5675W	16"x41"	1100°C
TT11-6.875x18	6.875"x18"	208/240V:3952W	16"x23"	1100°C

Please note, all exterior dimensions are approximate.



TT TUBE FURNACE

MODEL	HEATED LENGTH (IDxD)	V:W	EXTERNAL DIMENSIONS (ODxD)	MAX TEMP
TT11-6.875x24	6.875"x24"	208/240V:5760W	16"x29"	1100°C
TT11-6.875x36	6.875"x36"	208/240V:7200W	16"x41"	1100°C
TT11-8.875x18	8.875"x18"	208/240V:4140W	18"x23"	1100°C
TT11-8.875x36	8.875"x36"	208/240V:8280W	18"x41"	1100°C
TT12-1x36	1"x36"	120V:1856W	8"x39"	1200°C
TT12-1.5-12	1.5"x12"	120V:847W	8"x15"	1200°C
TT12-1.5x24	1.5"x24"	120V:1548W	27"x8"	1200°C
TT12-2x12	2"x12"	120V:1100W	8"x15"	1200°C
TT12-2.5x18	2.5"x18"	120V:2420W	10"x21"	1200°C
TT12-2.5x24	2.5"x24"	120/240V:3225W	10"x27"	1200°C
TT12-3x12	3"x12"	120V:1650W	10"x15"	1200°C
TT12-3x18	3"x18"	120V:1700W	10"x21"	1200°C
TT12-3x24	3"x24"	120/240V:2166W	10"x27"	1200°C
TT12-3.5x18	3.5"x18"	120/240V:2618W	11"x21"	1200°C
TT12-3.5x24	3.5"x24"	208/240V:3400W	11"x27"	1200°C
TT12-4.125x18	4.125"x18"	208/240V:2975W	12"x23"	1200°C
TT12-4.125-36	4.125"x36"	208/240V:5940W	12"x42"	1200°C
TT12-5x18	5"x18"	208/240V:3780W	14"x23"	1200°C
TT12-5x24	5"x24"	208/240V:5760W	14"x29"	1200°C

Please note, all exterior dimensions are approximate.



TT TUBE FURNACE

MODEL	HEATED LENGTH (IDxD)	V:W	EXTERNAL DIMENSIONS (ODxD)	MAX TEMP
TT12-5x36	5"x36"	208/240V:8375W	14"x41"	1200°C
TT12-5x48	5"x48"	208/240V:10080W	14"x53"	1200°C
TT12-6.125x24	6.125"x24"	208/240V:5760W	16"x29"	1200°C
TT12-6.125x36	6.125"x36"	208/240V:8640W	16"x41"	1200°C
TT12-6.875x18	6.875"x18"	208/240V:4320W	16"x23"	1200°C
TT12-6.875x24	6.875"x24"	208/240V:7072W	16"x29"	1200°C
TT12-6.875x36	6.875"x36"	208/240V:10440W	16"x41"	1200°C
TT12-8.875x18	8.875"x18"	208/240V:5940W	18"x23"	1200°C
TT12-8.875x36	8.875"x36"	208/240V:11880W	18"x41"	1200°C

Please note, all exterior dimensions are approximate.

