

# PS500 CONTROL SYSTEM

## GENERAL INFORMATION

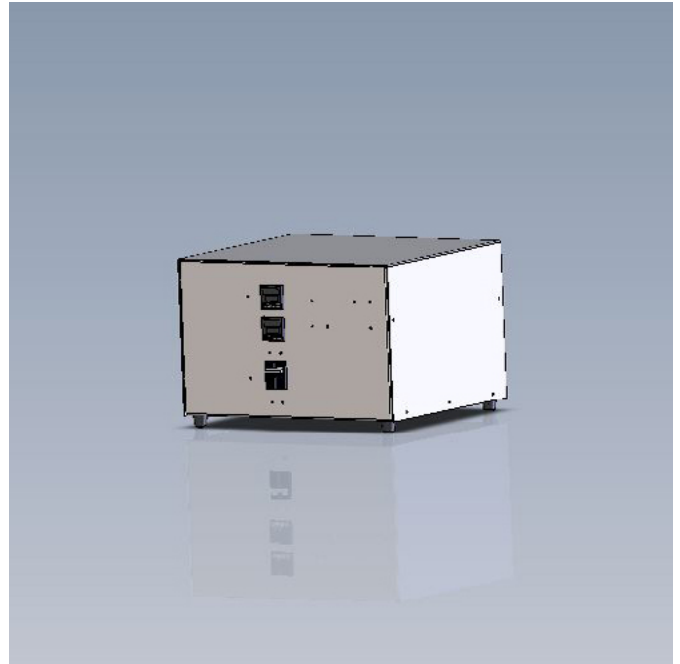
The MELLEN Model PS500 is a solid-state relay temperature control system. It is designed for use with a computer control system and includes the following major components:

1. A furnace dependent number of solid-state relay modules with appropriate voltage and amperage ratings.
2. A circuit breaker with appropriate voltage and amperage ratings to permit connection to customers main power source.
3. A MELLEN bench cabinet to house all control system components.
4. All necessary wiring, terminal boards, interconnections, etc to create a completely operational system.

## CUSTOMIZATION

The temperature control system can be customized through many different devices. If there are any additional requirements you may have for your assembly that are not on this list, please let MELLEN know and we will do our best to meet your requirements. Any of the following products are available for the temperature control system:

1. Any number of thermocouples is available for a wide temperature range.
2. Transformers are available to raise or lower AC voltages.
3. A rack mounted cabinet option is available to mount the control system at a specific position in the lab.
4. An over temperature alarm utilizing an independent, digitally indicating, digital setpoint "hi limit alarm" controller is available to prevent the furnace from over heating the work charge.



|               |                            |
|---------------|----------------------------|
| <b>SERIES</b> | PS500                      |
| <b>TYPE</b>   | Temperature Control System |

*As always, if this product does not meet your requirements, please contact us.  
Mellen will work with you personally to create a product that best suits your needs every time.*

Prices are valid until 2018.

