

NACCI 6" FURNACE

GENERAL INFORMATION

The furnace operates at temperatures up to 1250°C in air. The furnace comes standard with 1 inch and 2 inch adapters to allow one furnace to support 1 inch, 2 inch, and 6 inch diameter process tubes. The furnace has flexible heated lengths ranging from 6 inch to 36 inch. Utilizing a high-efficiency ceramic fiber insulation pack, the furnace has fast heat-up rates. The NACCI typically ships the same day.

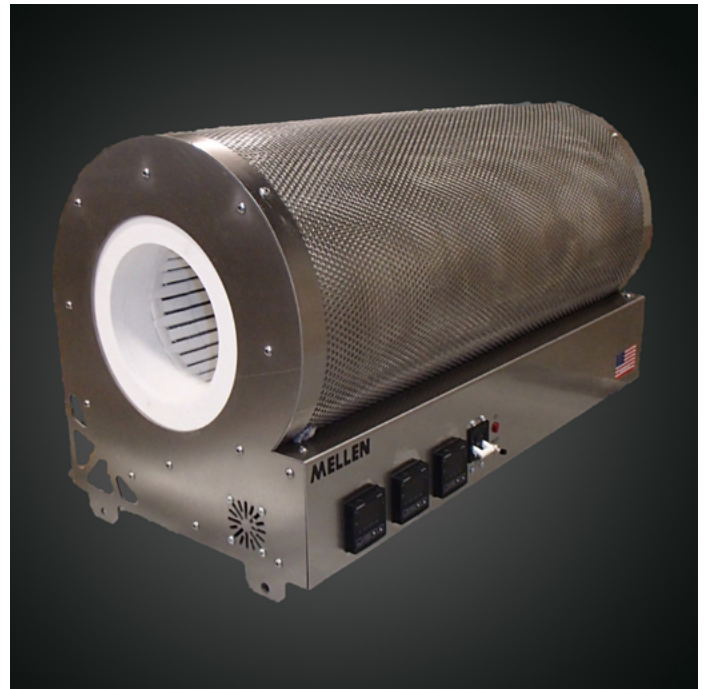
All furnaces contain integrated over temperature alarm protection. Three-zone configurations have multiple integrated over temperature alarms.

HEATING ELEMENT

The furnace utilizes Exposed APM heating elements capable of 1250°C in air.

CONTROLLER

The furnace system comes complete with an integrated dual-display controller with 8 Ramp/Soak/Programs and 8 Segments. It includes autotune and has a universal input with an auxiliary alarm output. An RS 485 Communications Port is available. An over temperature alarm is integrated.



SERIES	NACCI 6" Furnace
MAX TEMPERATURE	1250°C
ELEMENT TYPE	Exposed APM
CONTROLLER	Integrated Control System
VOLTS	120V & 208V/240V

*As always, if this product does not meet your requirements, please contact us.
Mellen will work with you personally to create a product that best suits your needs every time.*

Prices are valid until 2018.



NACCI 6" FURNACE

MODEL	ZONES	HEATED LENGTH (IDxL)	V:W	EXTERNAL DIMENSIONS (ODxL)	PRICE
NV12.5-6x6-IC-120/240V-1Z-IOT	N/A	6" x 6"	120V:1750W	16"x14"x10.75"	\$4,195.00
NV12.5-6x12-IC-120/240V-1Z-IOT	N/A	6" x 12"	120V:3500W	16"x14"x16.75"	\$4,795.00
NV12.5-6x18-IC-208/240V-1Z-IOT	N/A	6" x 18"	208V:5250W	16"x14"x22.75"	\$6,195.00
NV12.5-6x18-IC-208/240V-3Z-IOT*	6"-6"-6"	6" x 18"	208V:5250W	16"x14"x22.75"	\$7,495.00
NV12.5-6x24-IC-208/240V-1Z-IOT	N/A	6" x 24"	208V:7000W	16"x14"x28.75"	\$6,895.00
NV12.5-6x24-IC-208/240V-3Z-IOT*	8"-8"-8"	6" x 24"	208V:7000W	16"x14"x28.75"	\$8,495.00
NV12.5-6x30-IC-208/240V-3Z-IOT*	10"-10"-10"	6" x 30"	208V:9500W	16"x14"x34.75"	\$9,095.00
NV12.5-6x36-IC-208/240V-3Z-IOT*	12"-12"-12"	6" x 36"	208V:10500W	16"x14"x40.75"	\$9,995.00

*-3Z indicates a three-zone configuration.

Please note, all exterior dimensions are approximate.

