

# CV CRUCIBLE FURNACE

## GENERAL INFORMATION

The furnace operates at temperatures up to 1600°C in an inert atmosphere or vacuum and 1325°C in air. Mellen uses quality, low-mass ceramic fiber insulation for thermal efficiency. The furnace's outer skin consists of an 18-gauge stainless steel shell that ensures maintenance-free durability. The bottom 1/4 inch thick steel end plate is reinforced to prevent thermal distortion. One flanged, rugged firebrick lid with a handle comes standard with the furnace.

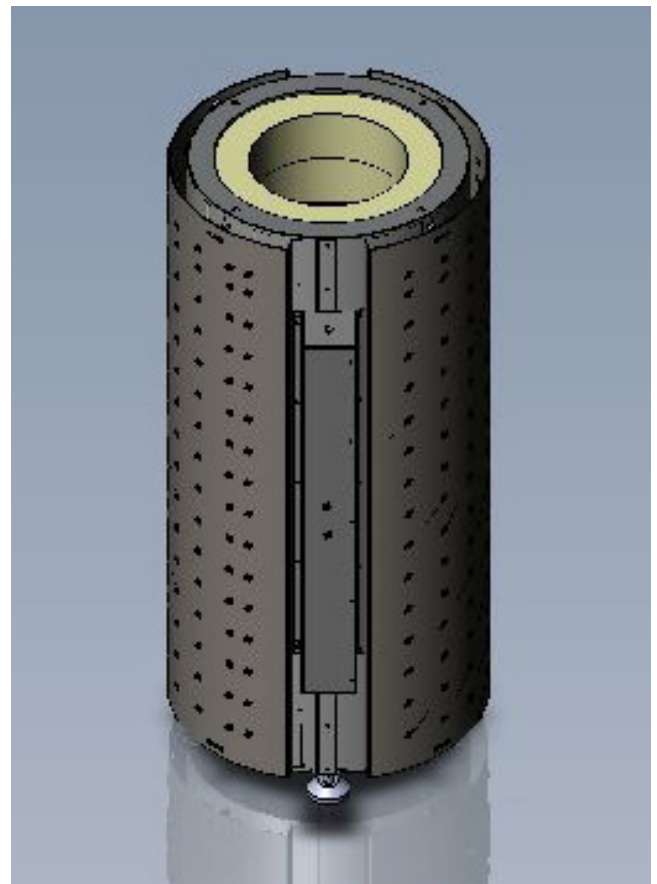
The beauty of the Vulcan line is that it breaks the boundary of what a standard furnace is. With the Vulcan line, any size furnace is a standard furnace. The heating elements in no way limit the size or shape of the furnace. If there are dimensions that you require, Mellen can make them.

## HEATING ELEMENT

The furnace utilizes Vulcan heating elements capable of 1600°C in an inert atmosphere or vacuum and 1325°C in air.

## CONTROLLER

Sold Separately.



SERIES	CV Crucible Furnace
MAX TEMPERATURE	1325°C
ELEMENT TYPE	Vulcan
CONTROLLER	Sold Separately
VOLTS	120V & 208V/240V

*As always, if this product does not meet your requirements, please contact us.  
Mellen will work with you personally to create a product that best suits your needs every time.*

Prices are valid until 2018.



# CV CRUCIBLE FURNACE

MODEL	HEATED LENGTH (IDxD)	V:A	EXTERNAL DIMENSIONS (ODxD)	ZONES	MAX TEMP
CV13.25-3x12-1Z	3"x12"	208V:15A	11"x20"	1	1325°C
CV13.25-3x16-1Z	3"x16"	208V:20A	11"x24"	1	1325°C
CV13.25-3x16-2Z	3"x16"	208V:20A	11"x24"	2	1325°C
CV13.25-3x24-1Z	3"x24"	208V:30A	11"x32"	1	1325°C
CV13.25-3x24-2Z	3"x24"	208V:30A	11"x32"	2	1325°C
CV13.25-3x24-3Z	3"x24"	208V:30A	11"x32"	3	1325°C
CV13.25-3x36-1Z	3"x36"	208V:40A	11"x44"	1	1325°C
CV13.25-3x36-2Z	3"x36"	208V:40A	11"x44"	2	1325°C
CV13.25-3x36-3Z	3"x36"	208V:40A	11"x44"	3	1325°C
CV13.25-3x48-1Z	3"x48"	208V:60A	11"x56"	1	1325°C
CV13.25-3x48-2Z	3"x48"	208V:60A	11"x56"	2	1325°C
CV13.25-3x48-3Z	3"x48"	208V:60A	11"x56"	3	1325°C

Please note, all exterior dimensions are approximate.

